

COMMITTEE: Social Cultural and Humanitarian Committee (GA3)

TOPIC: Improving Accessibility and the Inclusion of Persons with Disabilities in Urban Areas.

STUDENT OFFICER: Dora Georgiadi

POSITION: Co-chair

Personal Introduction

Dear delegates,

My name is Dora Georgiadi and I will be serving as co-chair in the Social, Cultural and Humanitarian Committee GA3. It is my absolute honour to be serving as a chair in CSMUN and this will be my second time serving as a Student Officer.

At this point, I would like to remind you of my role as a Student Officer; that is to assist you in all committee related issues both before and during the conference. My Co-chairs and I will be at your disposal for any inquiries on procedural matters including debate and lobbying.

I will be the expert chair on the topic of Improving Accessibility and the Inclusion of persons with disabilities in urban areas. Should you have any inquiries on the topic, do not hesitate to contact me. It is a very crucial issue that has gained a lot of attention, particular in the past few years. I wish you all the best of luck on your research and I hope that it will result in fruitful and successful debate.



I look forward to meeting you all in October!

Yours truly,

Dora Georgiadi

dogeorgiadi@gmail.com

Topic Introduction

In our world, there are over 1 billion people worldwide with a disability. This means that over 15% of the global population lives with a form of a disability. There should be something done in order to improve the lives of those disabled.

After a lot of research, it has been shown that women are more likely to be disabled than men and as an extent of that, older people more than the younger ones. LEDCs have higher rates of disabilities due to the fact that they are not able to provide their civilians with basic healthcare needs, such as treatments against cancer or any other illness. As a result of this lack of treatment, many face disability.

Disability is a compounding factor that impacts many aspects of a person's life. People with a disability experience poor health, have less access to education and work opportunities, and are more likely to live in poverty. This can be caused by a variety of reasons, including a physical lack of access to buildings and transportation, social stigma, lack of service provision and increased likelihood of being left out of decision-making that affects their wellbeing. The importance of improving the access and inclusion of disabled people in urban areas is hence highlighted greatly in examining the reasons which may render the life standard of someone disabled sub-par.



Definition of key terms

Persons with Disabilities (PWD)

Includes those who have long-term physical, mental, intellectual or sensory impairments.¹

Urban areas

Urban areas are very developed, meaning that there is a high density of human structures such as houses, commercial buildings, roads, bridges, etc. . "Urban area" can refer to towns, cities, and suburbs. An urban area includes the city itself, as well as the surrounding areas.²

Racism

Prejudice, discrimination, or antagonism directed against a person or people on the basis of their membership of a particular racial or ethnic group, typically one that is a minority or marginalized.³

Disability

¹ "Persons with Disabilities | Department of Health website." <https://www.doh.gov.ph/persons-with-disabilities>. Accessed 16 Jul. 2020.

² "urban area | National Geographic Society." <https://www.nationalgeographic.org/encyclopedia/urban-area/>. Accessed 16 Jul. 2020.

³ "Racism | Definition of Racism by Oxford Dictionary on Lexico" <https://www.lexico.com/definition/racism>. Accessed 16 Jul. 2020.



A disability is any condition of the body or mind that makes it more difficult for the person with the condition to do certain activities and interact with the world around them (problems on reading, writing and low communication skills).⁴

LEDCs

Stands for “Less Economic Developed Countries⁵”

MEDCs

Stands for “More Economically Developed Countries⁶”

SSDI

Stands for “Social Security Disability Insurance⁷”

⁴ "Disability and Health Overview | CDC." <https://www.cdc.gov/ncbddd/disabilityandhealth/disability.html>. Πρόσβαση στις 8 Αυγ. 2020.

⁵ "Least Developed Countries (LDCs) | Department of Economic" <https://www.un.org/development/desa/dpad/least-developed-country-category.html>. Accessed 16 Jul. 2020.

⁶ "Contrasts in development test questions - GCSE ... - BBC." <https://www.bbc.co.uk/bitesize/guides/zs7wrdm/test>. Accessed 31 Jul. 2020.

⁷ "Three Big Differences Between SSI and SSDI" 23 Feb. 2020, <https://specialneedsanswers.com/three-big-differences-between-ssi-and-ssdi-14866>. Accessed 17 Jul. 2020.



Background Information

Part A: Mental Disorders (MD)

Musculoskeletal System and Connective Tissue

Accounts for more than 30.5 percent worldwide of SSDI beneficiaries. This includes osteoarthritis, fibromyalgia spinal cord injury, carpal tunnel, degenerative disc disease and amputation.⁸ Those illnesses can cause a lot of damage and serious issues in a person's life.

Mood Disorders

Worldwide, mood disorders are one of the most serious diseases a person can have. More than 14.9 percent of the population suffers from a type of mood disorder.⁹ This includes bipolar disorder, depression (similar to this is also the Dysthymic disorder). Further, some mood disorders can be characterized as Cyclothymic Disorder. However, this disease can cause emotional ups and downs which are, although, dissimilar to those occurring in bipolar disorder.

Nervous System and Sense Organs

⁸ "Social Security's Top 10 Disabilities in (Almost) Real Terms" 20 Μαρ. 2018, <https://www.truehelp.com/social-securitys-top-10-disabilities-in-almost-real-terms/>. Πρόσβαση στις 7 Αυγ. 2020.

⁹ "Social Security's Top 10 Disabilities in (Almost) Real Terms" 20 Μαρ. 2018, <https://www.truehelp.com/social-securitys-top-10-disabilities-in-almost-real-terms/>. Πρόσβαση στις 7 Αυγ. 2020.



The percentage of sufferers of this disability is 9,3%.¹⁰ This disability includes suffering a stroke and Meniere's disease. Meniere's disease is a disorder that affects the inner ear, responsible for hearing and balance. This usually affects only one ear but there are multiple situations that can affect both.

Schizophrenia and other Psychotic Disorders

Globally, 4.8 percent of people suffer from such disorders.¹¹ Schizophrenia may cause hallucinations and a variety of other symptoms. Schizophrenia is a psychological disorder in which the person that suffers from can't distinguish illusions from reality. People with this specific disease follow chronic treatment.

Intellectual Disability

Over 4.1 percent of the global population suffers from intellectual disability.¹² This disability is characterized by the significant and serious limitation of both intellectual functioning and adaptive behavior; in the sector of intellectual functioning, the person that suffers may be unable to read, and solve or learn about problems and situations. The adaptive sector refers to a person's ability to perform a range of everyday social and practical activities. This disability commences before the age of 18.

¹⁰ "Social Security's Top 10 Disabilities in (Almost) Real Terms" 20 Μαρ. 2018, <https://www.truehelp.com/social-securitys-top-10-disabilities-in-almost-real-terms/>. Πρόσβαση στις 7 Αυγ. 2020.

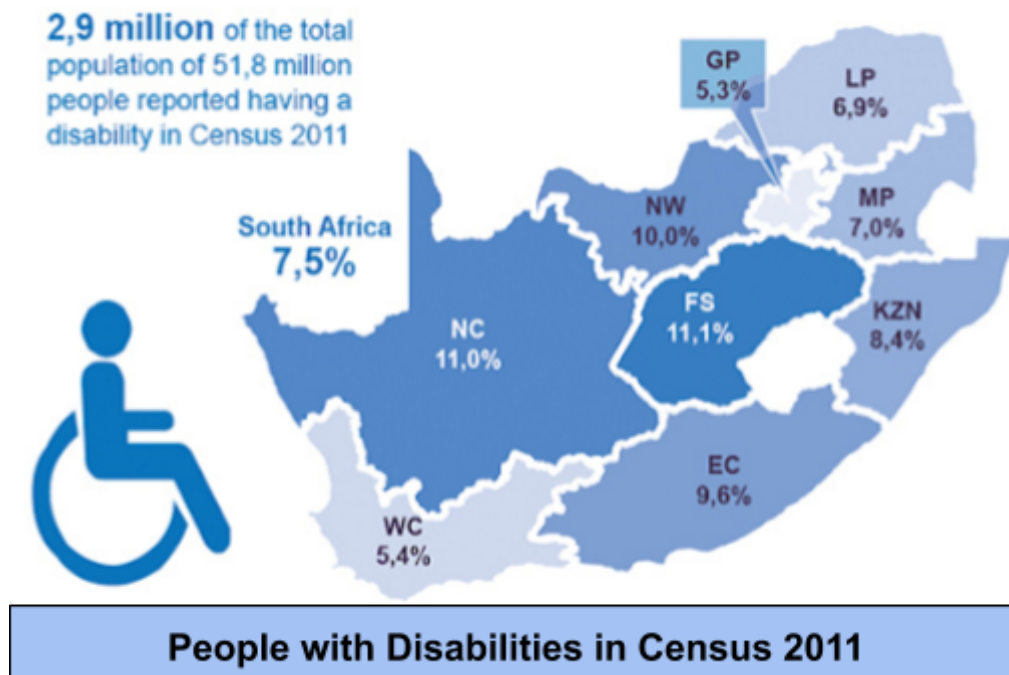
¹¹ "Social Security's Top 10 Disabilities in (Almost) Real Terms" 20 Μαρ. 2018, <https://www.truehelp.com/social-securitys-top-10-disabilities-in-almost-real-terms/>. Πρόσβαση στις 7 Αυγ. 2020.

¹² "Social Security's Top 10 Disabilities in (Almost) Real Terms" 20 Μαρ. 2018, <https://www.truehelp.com/social-securitys-top-10-disabilities-in-almost-real-terms/>. Πρόσβαση στις 7 Αυγ. 2020.

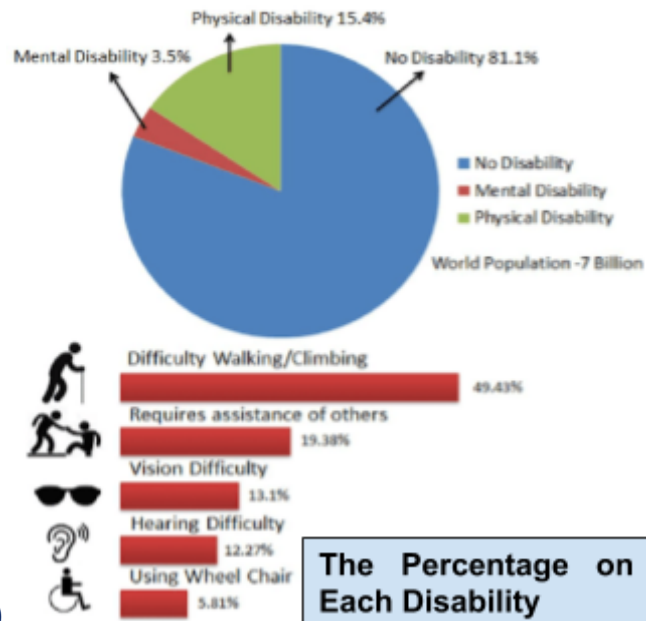


Organic Mental Disorders

The percentage of sufferers of these disabilities is up to 3.4% -3.5%.¹³ These disabilities include traumatic brain injury, Alzheimer's disease and korsakoff's syndrome. Traumatic brain injury, which is the disruption of the normal function of the human brain, is caused by a bump or penetrating head injury. Alzheimer's disease, which evolves over the years and usually affects older people. The first stages of the disease cannot be easily identified. As the disease develops, the symptoms evolve very quickly. The result is total memory loss and the inability to understand what is said or done.



¹³ "Social Security's Top 10 Disabilities in (Almost) Real Terms" 20 Μαρ. 2018, <https://www.truehelp.com/social-securitys-top-10-disabilities-in-almost-real-terms/>. Πρόσβαση στις 7 Αυγ. 2020.



Part B: Physical Disorders (PD)

Vision Impairment

Vision impairment refers to people who are partially or totally blind. This specific disease is either present from birth or can be caused by other diseases, such as encephalitis.

Deaf or Hard of Hearing

This disorder is similar to the previous one, however refers to those who are partially or totally deaf. This means they are unable to hear anything. The consequences of this is that the person with this disease finds it more difficult to communicate easily with their environment and the people in it.

Physical Disabilities

These diseases cause impairments in physical functioning, usually either their mobility, dexterity (skill in performing manual tasks), or stamina. The disability may be permanent or temporary. It may exist from birth or be acquired later in life.

Part C: Causes and Impact of Disability

The causes of disability are not easily identifiable. The factors are many but not always clear. However, scientists have concluded that there are four primary causes;

Illness

Illnesses such as cancer, a heart attack or more commonly by diabetes cause the majority of long term disabilities. Such illnesses can further cause several serious problems to an individual, such as diabetes-related seizures. This situation can be very harmful for the person in his/her psychological life due to its not his/her choice to this happening

Lifestyle choices

Lifestyle choices and personal behaviour are also major contributory factors leading to obesity. For example the lack of physical training and obsession to eat lead to heart problems that are not easy to be solved. Smoking on the other hand is another popular lifestyle choice due to the fact that over 1 billion people smoke worldwide.¹⁴ Smoking is also a reason why a person has a disability which can be managed in some situations but in some others can harm the smoker.

Hereditary Reasons

¹⁴ "Smoking - Our World in Data." <https://ourworldindata.org/smoking>. Πρόσβαση στις 14 Αυγ. 2020.



The hereditary reason can mean biological can mean when a parent transmits a gene to the child. This gene can be a characteristic that the child has (eye color, hair type,) or even an illness or an autoimmune disease. The hereditary reason is considered one of the primary reasons for disability. This is the only factor which remains uninfluenced by a person's lifestyle, or illnesses. Hereditary illnesses can be traced back to up to 7 generations, and can greatly influence one's life.

Unemployment

Unemployment is a common effect of disability, and it has been chronically harmful towards society. unemployment can be caused by disability because due to the usual, in our days, social exclusion. This means that some people, these days can be racist in front of those circumstances and do not accept people with disabilities. Also some companies do not accept people with disabilities because there is a big amount of competition and the managers (leaders) prefer to choose the “healthy” ones. Millions of people worldwide are unemployed without a basic salary in order to live a good life and be able to support their families and loved ones. Furthermore, most disabilities are not work related and therefore not covered by workers compensation, meaning that workers already suffering from physical ailments can fall into poverty and suffer financially as well.

Social Impact:

The social impact in this case is big. Unemployment , as mentioned previously, can harm both financially and socially the people. those peoples may experience a mental illness like depression which is the result of their limitation. Financial problems can be caused by unemployment and also from the limitations that they



face everyday. This means that through the fact that most of the places are not disable friendly they can't move easily. On the other hand, the social harm it's different. There are a lot of people in this world that do not accept people with disabilities. This can create racist behaviours. those behaviour is a very common thing nowadays because some people can't accept something different than a stereotype that they have create.

Major countries and organizations involved

The Netherlands

The government of the Netherlands attempts to aid people with disabilities by helping them participate and belong to the dutch society. They support that disabled people can have the same skills and abilities as a non-disabled person. They further attempt to communicate the meaning of equality in all the new generations.

New Zealand

The New Zealand disability strategy is very similar to the one of the Netherlands. The government tries to ensure that all people in New Zealand are equal and have the same chances and rights, uninfluenced by whether or not they are disabled in. According to research, disabled people enjoy a decent life in New Zealand.



Canada

Canada's set of laws make it clear that every individual in Canada “regardless of race religion national or ethnic origin,sex, age with a physical or mental disability” is to be considered equal in the domains of social treatment,education and lifestyle.

United Kingdom

The United Kingdom's government states that there are 67,9¹⁵ million people in the UK. Of those, 8% of the child population,¹⁶ 19% of the working age population¹⁷ and 45% of the pension age population have a disability, either mentally and physically. The UK government stands in favor of helping people with disabilities in every aspect of their lives.

France

The French government helps people with disabilities by requiring that all new buildings and existing public buildings must be accessible to disabled people. There have been several improvements throughout recent years, and many large cities such as Paris and Lyon (both of which are popular tourist areas) are becoming more accessible for those who are disabled.

American Association of People with Disabilities (AAPD)

¹⁵ "UK Population (2020) - Worldometer." <https://www.worldometers.info/world-population/uk-population/>. Πρόσβαση στις 14 Αυγ. 2020.

¹⁶ "UK Population (2020) - Worldometer." <https://www.worldometers.info/world-population/uk-population/>. Πρόσβαση στις 14 Αυγ. 2020.

¹⁷ "UK Population (2020) - Worldometer." <https://www.worldometers.info/world-population/uk-population/>. Πρόσβαση στις 14 Αυγ. 2020.



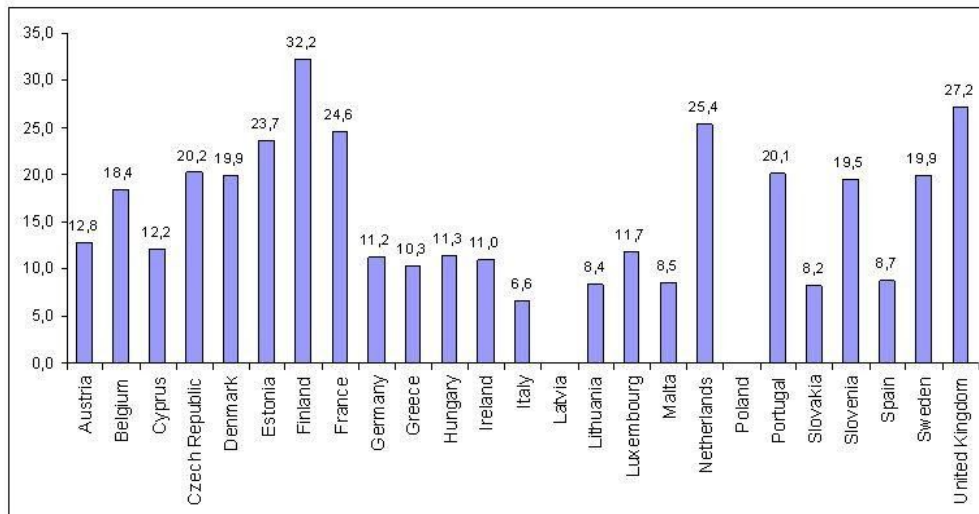
The American Association of People with Disabilities is an organization which tries to help the people with disabilities in a lot of ways. Those ways can be financial and political. They try to do this in order to make them have more power as an active part of a community. This organization has helped people with disabilities for over 20 years, having started on the 25 July of 1995. The founders try to help people with disabilities understand and comprehend their civil rights. They make an effort in promoting equality in opportunities in both education and financial help.

American Council of Blind

The American Council of the Blind (ACB) is composed of approximately 70 state chapters and special-interest affiliates representing a diverse range of groups within the blind community, including students, families, teachers, attorneys, governmental employees, entrepreneurs, vending stand operators and the LGBTQ community. The organization was founded in 1961, however its origins begin in 1880. The organization accepts all people who are blind or with any visual problems, regardless of their background (race, ethnicity or religion).



Percentage of population aged 16-64 (working age population) stating that they have a long-standing health problem or disability (LSHPD) (EU25 countries, 2002)



Employee Assistance and Resource Network on Disability Inclusion (EARN)

Employee assistance and resource network on disability inclusion (EARN) is an organization which actually supports other organizations in their efforts to make the disable people's lives better. EARN helps and tries to educate private and non-private organizations to make some special buildings to help the people with a disability.



Timeline of events

<u>Date</u>	<u>Event</u>
January 1801	Establishment of education for mental disabled people.
January 1809	Luis Braille, inventor of the alphabet of the blind is born.
April 1817	The first formal education for the deaf begins in the USA.
July - November 1914	The Great War leads to many veterans being disabled.
July 1964	The Civil Rights Bill bypasses Persons with disabilities.
July 1968	The First International Special Olympics Games take place.
April 1977	Activists in Denver protest for diasabled people in order to improve accessibility in buses and make all the stations friendlier to them in order to be more comfortable in their movements with public transportation.



December 1992	The UN Encourages Global Equality and Participation for the Disabled International day of persons with disabilities is created.
---------------	--

Previous attempts to solve the issue

International conference – From exclusion to empowerment: The Role of Information and Communication Technologies for Persons with Disabilities

In this conference, there were representatives from all around the world, in order to discuss and defend the rights of disabled people. The main topic and issue that was discussed was the role of information and communication of new and innovative technologies in favor of persons with disabilities.

World Programme of Action Concerning Disabled Person:

The world programme of action (WPA) is a global action which focuses on enhancing disability prevention, rehabilitation and equalization of opportunities, which pertains to full participation of persons with disabilities in social life and national development. The main theme of the action is “equalization of opportunities’ . its philosophy, clearly wants to ensure the full participation of people with disabilities in both social and economic life.



Relevant UN Resolutions, Events, Treaties and Legislation

Resolution [A/RES/62/170](#) (Convention on the Rights of Persons with Disabilities)

This convention is referred to as an international human rights treaty in which the protection of the rights and dignity of people with disabilities is highlighted. The General Assembly of the United Nations adopted a resolution in which these rights are emphasised. Within the resolution, there are mentions of an increase in raising awareness and combating stereotypes, adopting the Convention, as well as organizations both intergovernmental and nongovernmental helping the spread of basic human rights.

Resolution [A/RES/62/127](#)

As a resolution, it was established and voted on December 18 2007. This resolution promotes the idea of inclusion of disabled people in aspects such as social security, democratic processes and in the UN itself. It further calls for an increase in data collection and reporting on the issue of inclusion of disabled persons, as well as encourages all member states to both collect and analyse all the information that can be found on the issue.



Possible Solutions

Education

All governments should provide all citizens (both those with disabilities and without) with substantial educational opportunities in order to promote the idea of equality in the domain of human rights, as education is a right which every person is entitled to. Further, through education, citizens will be able to learn about the needs of those with disabilities, and what they as individuals can do to help. This can be achieved by raising awareness through promotional campaigns, or schooling programmes.

Environment

One more aspect that the governments should take notice is the environment that people with disadvantages live in. This suggests that all governments should provide them with a friendly environment. People with disabilities need to be provided with such an environment that corresponds to their needs as individuals. A suggestion in promoting this idea could be that disabled people are provided with all necessary additions to urban and daily life, such as specialized parking lots and sonorous traffic lights.

Financial Help and Hospital Treatment

All people with disabilities should be provided with a chance to receive proper treatment in order to ameliorate their condition and way of life, regarding their disability. However, such treatments can be costly, and most do not have the



financial means to access treatments like these. Government provision of financial aid to individuals in need of treatment for their disability would result in an improvement in their daily life, and hence have positive effects on society as a whole. This can be to have the best hospital treatment in order to avoid and prevent problems such as chemotherapy consequences and also diabetes injections.

Psychological Help

The most important thing for the people with a special disability or even a physical one is psychological help. This help can be provided from the family environment or even from a specific person which is the expert on those issues. This expert could be a psychologist or in some cases, a psychiatrist. In those cases the people with the disability try not to take advantage of their passion and try to be more autonomous. This can have as a result of not asking for any assistance even when they need it. This situation can only harm the person because with no help in this condition you can't achieve everything you want.

BIBLIOGRAPHY

General

- “#Healthier Lives Better Health for People with Disabilities.” *Hospital Association of South Africa*, 18 Feb. 2019,
hasa.co.za/article/healthierlives-better-health-for-people-with-disabilities/.
- , Chuka Nwanazia, et al. “How Inclusive Is the Netherlands for People Living with Disabilities?” *DutchReview*, 18 Nov. 2019,



dutchreview.com/culture/living-in-the-netherlands/how-inclusive-is-the-netherlands-for-people-living-with-disabilities/.

AAPD, www.aapd.com/.

Brink, Susan. “How Is The World Treating People With Disabilities?” *NPR*, NPR, 18 Dec. 2016, www.npr.org/sections/goatsandsoda/2016/12/18/504964701/how-is-the-world-treating-people-with-disabilities.

Council of Europe. “International Day of Persons with Disabilities-Equality, Dignity and Equal Opportunities.” *Rights of Persons with Disabilities*, Council of Europe, 29 Nov. 2017, www.coe.int/en/web/disability/newsroom/-/asset_publisher/VSoWPX5RsgGR/content/international-day-of-persons-with-disabilities-?inheritRedirect=false.

Council of Europe. “International Day of Persons with Disabilities-Equality, Dignity and Equal Opportunities.” *Rights of Persons with Disabilities*, Council of Europe, 29 Nov. 2017, www.coe.int/en/web/disability/newsroom/-/asset_publisher/VSoWPX5RsgGR/content/international-day-of-persons-with-disabilities-?inheritRedirect=false.

“Disability and Health.” *World Health Organization*, World Health Organization, www.who.int/news-room/fact-sheets/detail/disability-and-health.

“Disability in the United Kingdom.” *Wikipedia*, Wikimedia Foundation, 20 June 2020, en.wikipedia.org/wiki/Disability_in_the_United_Kingdom.

“EARN.” *Employer Assistance and Resource Network on Disability Inclusion*, askearn.org/.

Grammar Girl, and Bonnie Mills. “What to Call People With Disabilities.” *Quick and Dirty Tips*, Grammar Girl, 17 Mar. 2020, www.quickanddirtytips.com/education/grammar/what-to-call-people-with-disabilities.

Heritage, Canadian. “Government of Canada.” *Canada.ca*, 7 Sept. 2018, www.canada.ca/en/canadian-heritage/services/rights-people-disabilities.html.

“Human Rights of Persons with Disabilities.” *OHCHR*, www.ohchr.org/EN/Issues/Disability/Pages/DisabilityIndex.aspx.



- “Making Extra-Curricular Activities Inclusive.” *NEADS*,
www.neads.ca/en/about/projects/inclusion/guide/pwd_01.php.
- “Our Mission.” *Home | American Council of the Blind, ACB*, www.acb.org/.
- “r/Disability - Best Countries to Live with a Disability?” *Reddit*,
www.reddit.com/r/disability/comments/9ubza0/best_countries_to_live_with_a_disability/.
- “Resolutions Enable.” *United Nations*, United Nations,
www.un.org/development/desa/disabilities/resolutions.html.
- “Resolutions Enable.” *United Nations*, United Nations,
www.un.org/development/desa/disabilities/resolutions.html.
- “Situation of Disabled Persons Living in the EU Countries Wojciech Bąba European Economic Integration Chair Cracow University of Economics. - Ppt Download.” *SlidePlayer*, slideplayer.com/slide/6864374/.
- “Social Security's Top 10 Disabilities in (Almost) Real Terms.” *True Help: A Division of Allsup®*, 20 Mar. 2018,
www.truehelp.com/social-securitys-top-10-disabilities-in-almost-real-terms/.
- “Staff Services.” *ANU*, The Australian National University,
services.anu.edu.au/human-resources/respect-inclusion/different-types-of-disabilities.
- “Staff Services.” *ANU*, The Australian National University,
services.anu.edu.au/human-resources/respect-inclusion/different-types-of-disabilities.
- “Statistics and Data Collection on Persons with Disabilities in Sierra Leone. - Proadiph : West African Regional Portal on the Rights of People with Disabilities.” *Proadiph*,
proadiph.org/Statistics-and-Data-collection-on-persons-with-Disabilities-in-Sierra-Leone.html.
- “Timeline.” *Disability History: Timeline*, www.ncl-d-youth.info/index.php?id=61.
- “Timeline.” *Disability History: Timeline*, www.ncl-d-youth.info/index.php?id=61.
- “Timeline.” *Disability History: Timeline*, www.ncl-d-youth.info/index.php?id=61.



www.facebook.com/FireflybyLeckey. “Best Countries for People with Intellectual Disabilities - Firefly Blog.” *English*, 10 Sept. 2018, www.fireflyfriends.com/uk/blog/best-countries-for-people-with-intellectual-disabilities/.

www.facebook.com/FireflybyLeckey. “Best Countries for People with Intellectual Disabilities - Firefly Blog.” *English*, 10 Sept. 2018, www.fireflyfriends.com/uk/blog/best-countries-for-people-with-intellectual-disabilities/.

“World Programme of Action Concerning Disabled Persons Enable.” *United Nations*, United Nations, www.un.org/development/desa/disabilities/resources/world-programme-of-action-concerning-disabled-persons.html.

Images/Graphs

Africa, Statistics South. “Stats SA Profiles Persons with Disabilities.” Statistics South Africa, www.statssa.gov.za/?p=3180.

<https://thumbs.dreamstime.com/b/handicapped-people-disabilities-happy-friendly-family-disable-injury-persons-assistants-vector-characters-136512487.jpg>

“Statistics and Data Collection on Persons with Disabilities in Sierra Leone. - Proadiph : West African Regional Portal on the Rights of People with Disabilities.” *Proadiph*, [proadiph.org/Statistics-and-Data-collection-on-persons-with-Disabilities-in-Sierra-L eone.html](http://proadiph.org/Statistics-and-Data-collection-on-persons-with-Disabilities-in-Sierra-L Leone.html).



